



Consolidated results
J&T FINANCE GROUP SE
as of March 31, 2025

J&T

Basic Information

Company name:	J&T FINANCE GROUP SE
Legal form:	European company (Societas Europaea)
Address:	Sokolovská 700/113a, Prague 8
Registered in the Commercial Register on:	26 August 2006
Registered capital:	CZK 15,780,308,188

The share capital of J&T FINANCE GROUP SE has been fully paid up and consists of 10 ordinary shares with a nominal value of CZK 200,000 each, 13,778,752 ordinary shares with a nominal value of CZK 1,000 each and 1,999,556,188 ordinary shares with a nominal value of CZK 1.

Number of organizational units (branches): 1

J&T FINANCE GROUP SE, organizačná zložka

Address: Dvořákovo nábřeží 8, Bratislava 811 02, Slovak Republic

Legal form: Enterprise of a foreign person (organizational unit of an enterprise of a foreign person)

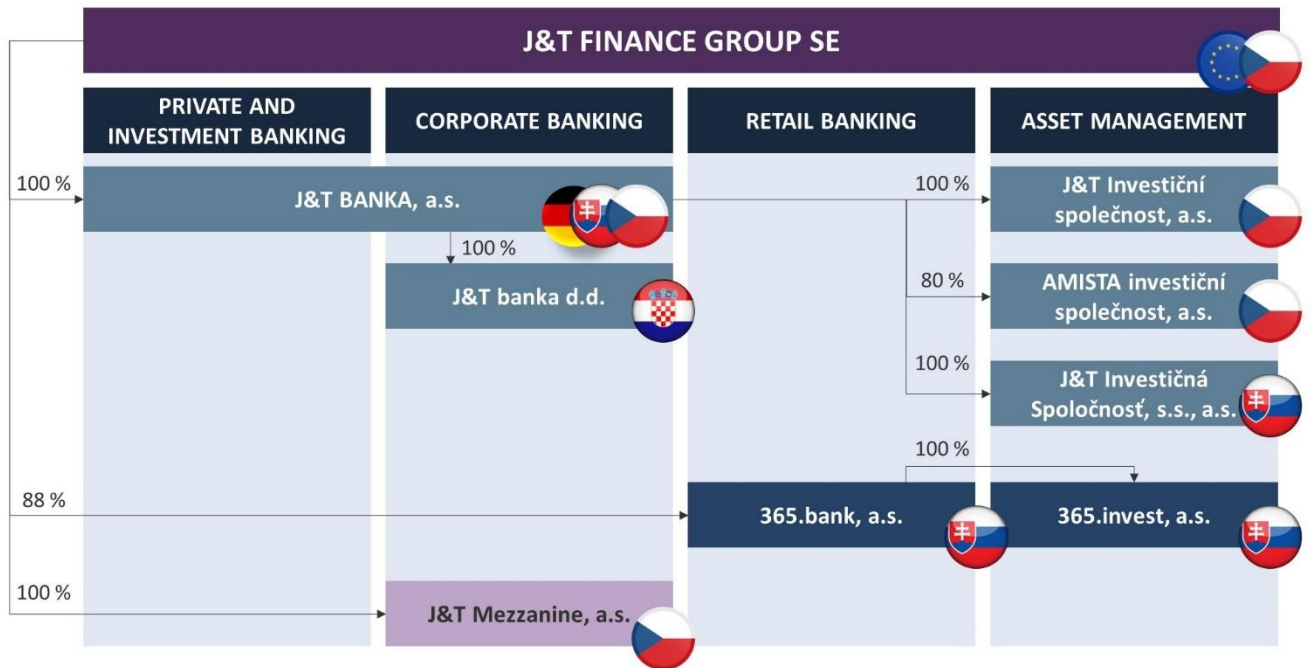
Registered on: 15 November 2013

Board of Directors: Ing. Patrik Tkáč, Chairman of the Board of Directors
 Ing. Ivan Jakobovič, Deputy Chairman of the Board of Directors
 Ing. Dušan Palcr, Deputy Chairman of the Board of Directors
 Štěpán Ašer, MBA, Member of the Board of Directors
 Ing. Igor Kováč, Member of the Board of Directors
 Ing. Michal Sedlák, Member of the Board of Directors

Proxy Holders: Mgr. Miloslav Mastný

Supervisory Board: Ing. Jozef Tkáč, Chairman of the Supervisory Board
 Ing. Jozef Kollár, Ph.D., Member of the Supervisory Board
 Marc Jean Jules Derydt, Member of the Supervisory Board

Structure of J&T FINANCE GROUP SE



Ownership structure: Jozef Tkáč (45.05%)

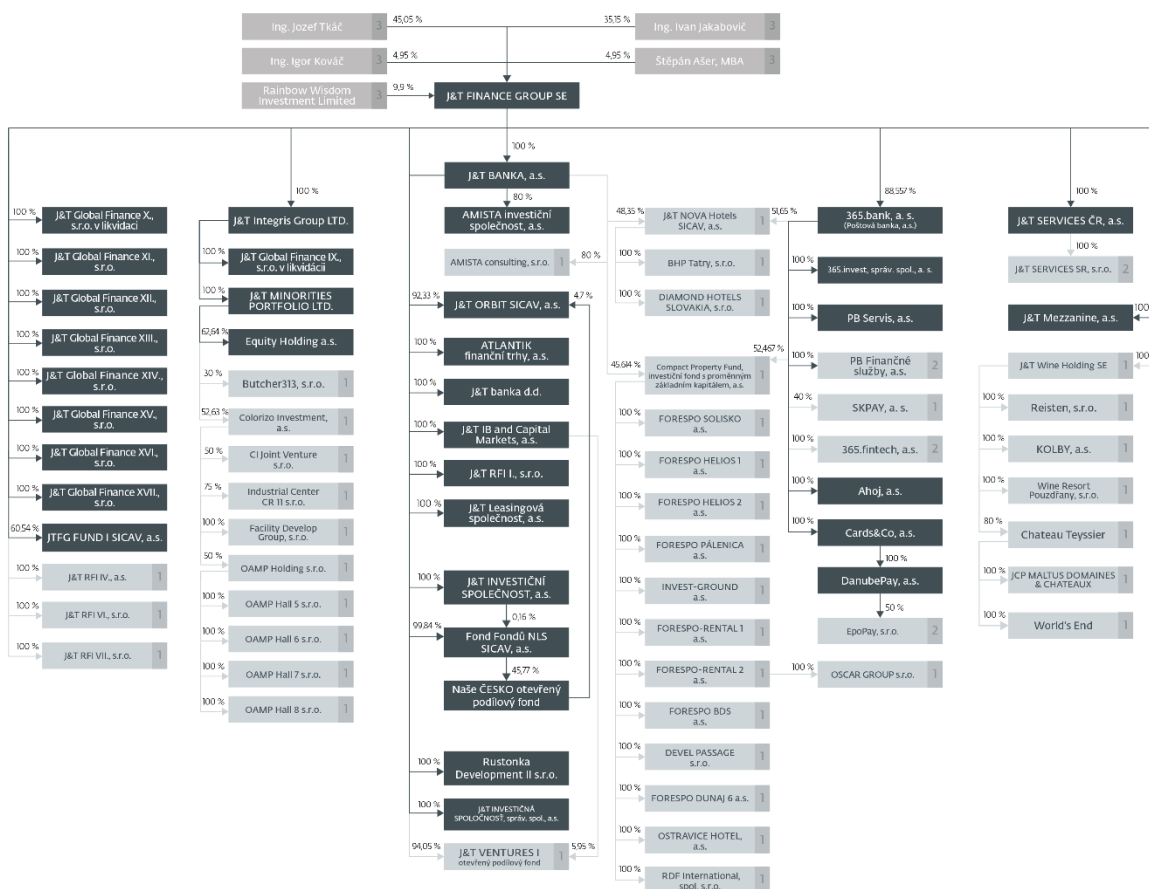
Ivan Jakobovič (35.15%)

Rainbow Wisdom Investments Limited (9.90%)

Štěpán Ašer (4.95%)

Igor Kováč (4.95%)

Structure of the Consolidation Group by Entities



Explanatory notes:

Reason for non-inclusion in the regulated consolidated group

1 – Not an institution, financial institution, ancillary services undertaking or an asset management company according to Art. 18 (6) of Regulation No. 575/2013/EU

2 – Not included due to its size, i.e. the entity meets the requirements according to Art. 19 (1) of Regulation No. 575/2013/EU

3 – J&T Finance Group SE is the ultimate consolidating entity

Consolidated Statement of Financial Position

in thousands of EUR	31.3.2025	31.3.2024	abs	%	31.12.2024
Assets					
Cash and cash equivalents	4 080 531	7 249 293	(3 168 762)	(44%)	5 247 302
Financial assets for trading	496 673	427 705	68 968	16%	417 626
Hedging derivatives (assets)	3 707	6 449	(2 742)	(43%)	3 581
Investment securities measured at fair value through profit or loss	455 005	483 086	(28 081)	(6%)	429 646
Investment securities measured at fair value through other comprehensive income	510 359	623 460	(113 101)	(18%)	512 380
Investment securities at amortised cost	1 832 678	1 023 801	808 877	79%	1 864 423
Disposal group held for sale	1 034	1 065	(31)	(3%)	1 024
Loans and advances to banks	531	4 720	(4 189)	(89%)	682
Loans and advances to customers	7 891 600	7 281 119	610 481	8%	7 854 819
FV changes of portfolio of hedged instruments - Loans and advances to customers	1 294	(1 474)	2 768	<(100%)	1 352
Trade receivables and other assets	889 577	713 870	175 707	25%	973 067
Current tax assets	30 930	8 690	22 240	>100%	20 783
Investments in equity accounted investees	13 058	15 743	(2 685)	(17%)	12 538
Investment property	190 134	154 798	35 336	23%	181 577
Intangible assets	94 740	99 490	(4 750)	(5%)	93 975
Property, plant and equipment	263 232	283 867	(20 635)	(7%)	265 911
Deferred tax assets	55 080	63 660	(8 580)	(13%)	55 683
Total assets	16 810 163	18 439 342	(1 629 179)	(9%)	17 936 369
Liabilities					
Trading liabilities	53 234	65 770	(12 536)	(19%)	64 361
Hedging derivatives (liabilities)	5 062	1 517	3 545	>100%	5 857
Liabilities associated with disposal group held for sale	-	-	-	-	-
Deposits and loans from banks	310 090	1 310 779	(1 000 689)	(76%)	424 848
Deposits and loans from customers	11 465 158	12 757 099	(1 291 941)	(10%)	12 649 817
Debt securities issued	803 520	728 887	74 633	10%	793 495
Subordinated debt	184 816	73 655	111 161	>100%	180 447
Other liabilities	1 381 881	1 098 584	283 297	26%	1 312 296
Current tax liability	14 458	53 379	(38 921)	(73%)	12 966
Provisions	10 714	15 304	(4 590)	(30%)	18 150
Deferred tax liabilities	8 681	9 936	(1 255)	(13%)	8 644
Total liabilities	14 237 614	16 114 910	(1 877 296)	(12%)	15 470 881
Share capital	574 138	574 138	-	-	574 138
Share premium	93 577	93 577	-	-	93 577
Reserves	58 794	27 487	31 307	>100%	42 860
Retained earnings	1 384 178	1 195 690	188 488	16%	1 296 816
Other capital instruments	218 900	218 900	-	-	218 900
Equity attributable to equity holders of the parent	2 329 587	2 109 792	219 795	10%	2 226 291
Non-controlling interests - other capital instruments	101 706	147 857	(46 151)	(31%)	100 136
Non-controlling interests	141 256	66 783	74 473	>100%	139 061
Non-controlling interests - TOTAL	242 962	214 640	28 322	13%	239 197
Total equity	2 572 549	2 324 432	248 117	11%	2 465 488
Total equity and liabilities	16 810 163	18 439 342	(1 629 179)	(9%)	17 936 369

Consolidated Statement of Profit and Loss

in thousands of EUR	31.3.2025	31.3.2024	abs	%	31.12.2024
Interest income calculated using effective interest rate	193 677	256 698	(63 021)	(25%)	949 721
Other interest income	3 227	3 691	(464)	(13%)	16 501
Interest expense	(88 241)	(132 532)	44 291	(33%)	(494 412)
Net interest income	108 663	127 857	(19 194)	(15%)	471 810
Fee and commission income	69 860	52 899	16 961	32%	240 514
Fee and commission expense	(9 184)	(8 912)	(272)	3%	(43 369)
Net fee and commission income (expense)	60 676	43 987	16 689	38%	197 145
Financial markets, net result	22 214	2 890	19 324	>100%	93 231
Other operating income	14 582	23 083	(8 501)	(37%)	89 599
Total income	206 135	197 817	8 318	4%	851 785
Personnel expenses	(43 363)	(42 443)	(920)	2%	(176 663)
Depreciation and amortisation	(10 220)	(8 618)	(1 602)	19%	(37 796)
Loss on disposal of subsidiaries	-	-	-	-	(2 613)
Other operating expenses	(30 055)	(35 001)	4 946	(14%)	(136 106)
Goodwill impairment	-	-	-	-	(3 606)
Total expenses	(83 638)	(86 062)	2 424	(3%)	(356 784)
Impairment of property, plant and equipment and intangible assets	116	(4)	120	<(100%)	(28 874)
Net impairment losses on loans, loan commitments and financial guarantees	(12 302)	5 313	(17 615)	<(100%)	(12 842)
Net impairment losses of financial assets except loans, loan commitments and financial guarantees	7 320	65	7 255	>100%	(3 819)
Profit (loss) from operations	117 631	117 129	502	%	449 466
Income (expense) from associates and joint ventures	408	-	408	-	7 821
Profit (loss) before tax	118 039	117 129	910	1%	457 287
Income tax expense	(21 893)	(29 876)	7 983	(27%)	(118 935)
Profit for the period	96 146	87 253	8 893	10%	338 352

Selected Financial Indicators

a) Consolidated Capital Adequacy

in thousands of EUR	31.03.2025	31.03.2024	abs	%	31.12.2024
Tier 1	1 950 540	1 870 160	80 380	4%	1 939 426
CET1	1 656 759	1 559 260	97 499	6%	1 647 119
AT1	293 781	310 900	(17 119)	(6%)	292 307
Tier 2	104 533	52 681	51 852	98%	108 014
Total regulatory capital	2 055 073	1 922 841	132 232	7%	2 047 440
Capital adequacy ratios					
CET 1	16,87%	15,68%	1,18%		16,03%
TIER 1	19,86%	18,81%	1,04%		18,88%
Total regulatory capital	20,92%	19,34%	1,58%		19,93%

b) Consolidated Loan Portfolio Quality

in thousands of EUR	31.03.2025	31.03.2024	abs	%	31.12.2024
Loans & advances to customers gross	8 223 248	7 625 277	597 971	8%	8 179 181
Allowances for loan losses	(331 648)	(344 158)	12 510	(4%)	(324 363)
Loans & advances to customers net	7 891 600	7 281 119	610 482	8%	7 854 819
NPL ratio	4,28%	5,30%	(1,01%)		4,21%